

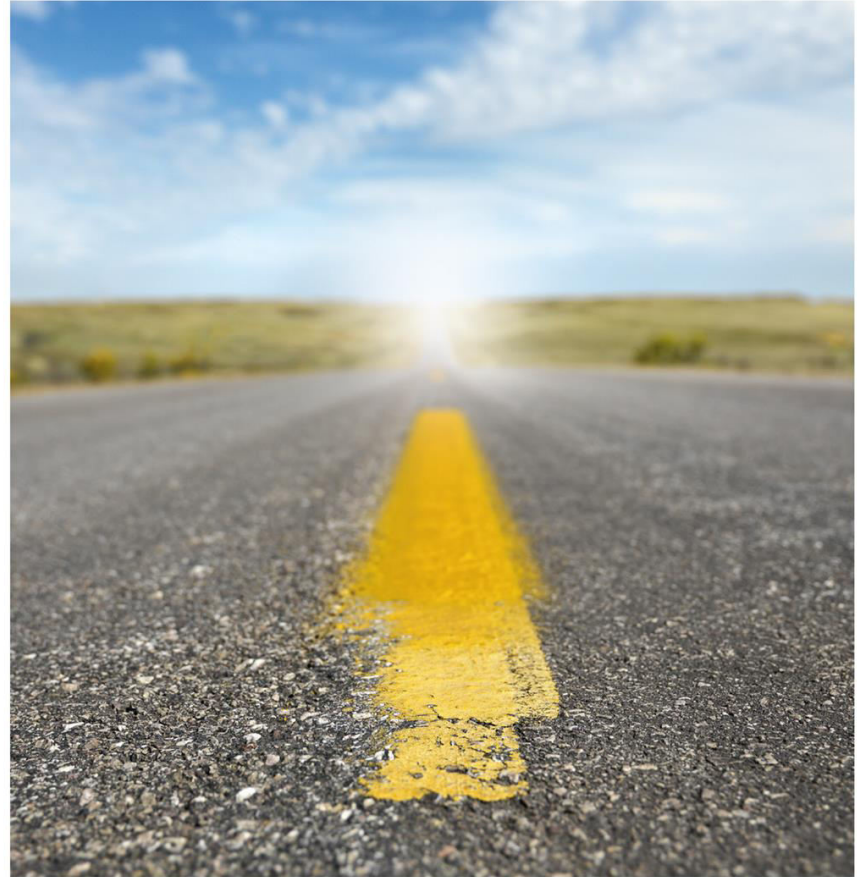
Injury Schemes Seminar

Road to Recovery



**Actuaries
Institute**

8-10 November 2015 • Hilton • Adelaide





ACT Scheme Update (Workers)

© < ACT Government >

*This presentation has been prepared for the Actuaries Institute 2015
Injury Schemes Seminar.*

*The Institute Council wishes it to be understood that opinions put forward
herein are not necessarily those of the Institute and the Council is not
responsible for those opinions.*

ACT Workers' Scheme Overview

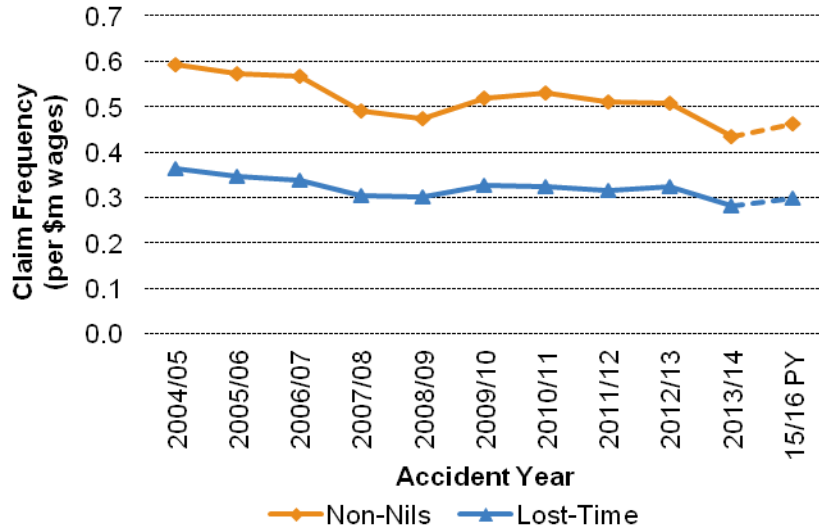
- **Underwriting model:** Privately underwritten, with self insurance
- **Underwritten scheme:** 16,000 employers
130,000 workers (90,000 full time)
- **Self insured:** \$143m wages, around 2% market share, 7 self insurers
- **Default insurance Fund:** Approx 20 new claims p.a.
- **Benefit design:** Hybrid (statutory no fault scheme + damages)
Short tail (short claim duration, lump sum focus)
- **Underwritten Price:** Around 2.5% of wages, stable to 2014-15
Cost pressures increasing in 2015-16

Policy Developments

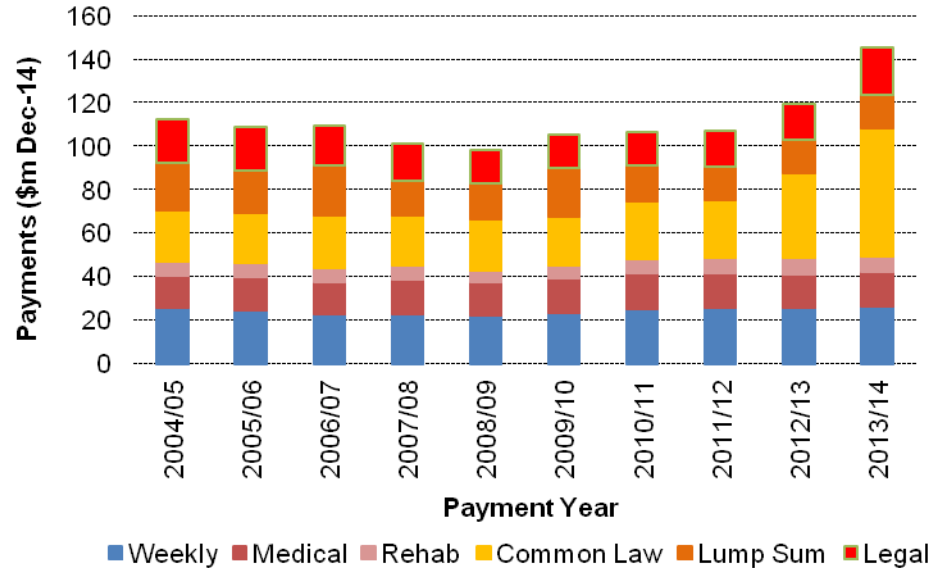
- National Injury Insurance Scheme by July 2016
- New workers' compensation scheme for ACT public servants
- ACCESS Canberra – integrated compliance and enforcement
- Claim and policy reporting standard modernisation and harmonisation

Scheme Performance

New Claims



Claim Payments

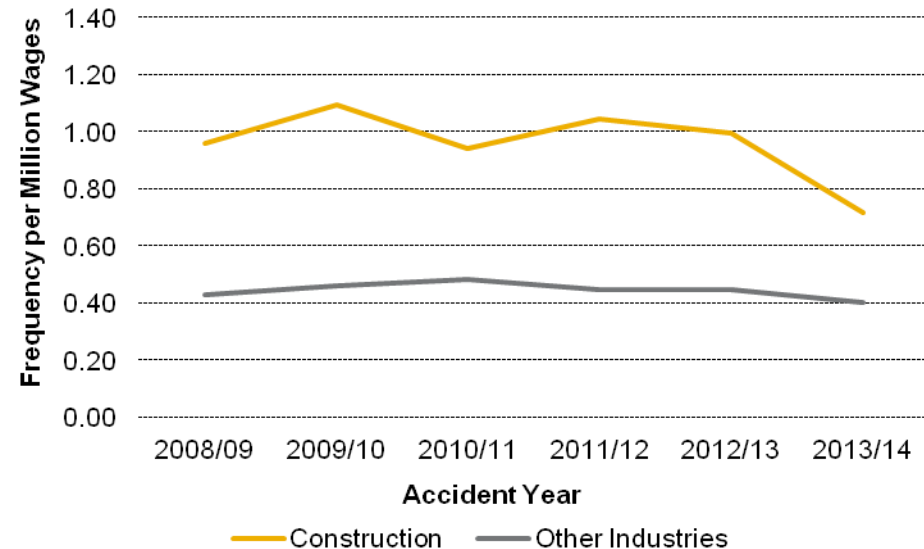


Construction Industry Intervention

- *Getting Home Safely: Inquiry into Compliance with Work Health and Safety Requirements in the ACT's Construction Industry*
 - 28 recommendations accepted in February 2013
 - Compliance and enforcement initiatives include
 - Industrial magistrates court established
 - Additional inspectors and infringement offences
 - Active certification on Govt commissioned contracts
 - Industry blitzes, safety events and training
 - Compulsory asbestos training

Construction Industry Performance

- 12 months following enhanced intervention model saw significant improvements:
 - claims reduced 27%
 - new lost time claims reduced by a third in 2013-14 (other industries flat)



Questions